



@-WITNESS XP

Remote Surveillance and Security system


Secure your place at Anytime from Anywhere.

Key Features

- **Display:** Max. 960 FPS display rate, up to 32 videos input.
- **Dual Monitor Display:** Allows live and eMap or playback screens to be viewed on separate monitors.
- **Screen:** Multi-Screen Display and Programmable switching.
- **Recording:** Records up to 480 (400) FPS.
- **Recording Modes:** Continuous, Alarm, Motion Detection, Instant & Scheduled.
- **Stability:** The Watchdog feature recovers the system after system failure.
- **Back Up:** E-Z Backup Program onto External Storage Device (HDD, CD-RW, DVD-RW, etc.) & Play them with Windows Media Player or our "EZ Playback" Software.
- **E-Z Playback Search:** One can search by Time, Date, Event & Cameras and Playback up to 16 cameras simultaneously.
- **e-Map:** An e-map is a graphical overview of a site, indicating the locations of the cameras, sensors and Fingerprint.
- **Intelligent Search:** Allows for the narrowing of the search in a specific masked region of the recorded video. The search engine is able to search the masked region, so the video that is retrieved will show exactly when the object appeared/disappeared.
- **Motion Detection:** Built-In Motion Detection Software can be set up with selectable zones & sensitivity control.
- **Camera Position Authentication Alarm:** When the position of camera moves, the alarm will activate and the pre setup image will pop-up for customer comparison.
- **Pre-Alarm Function:** To have complete coverage of an event, seconds of video prior to motion detected by the camera will be recorded, if enabled.
- **Watermark:** Built-In Digital Watermark which prevents images being altered or modified.
- **Video Loss:** Automatically notifies user when video signal lost due to abnormal conditions.
- **Alarm Notification:** Notifies via phone, email or live video, when alarm is triggered.
- **Event Log:** Will show records for logins/logouts, video loss, remote access, HDD failure and motion detection.
- **Triplex Operation:** Simultaneous Recording, Playback and Remote-Viewing.
- **Dynamic IP Solution:** With no static IP, with our optional "ID Codes" we connect them for you.
- **Web Browser/I.E.:** Search & playback of archiving and/or downloading options via Web Browser/I.E. can be remotely activated from anywhere, as also the monitoring of the video and audio clips of the DVR.
- **PDA Remote Viewing:** Special client site software supports Pocket PC for remote monitoring. View your sites in the palm of your hands!
- **Remote Monitoring, Recording, Playback & Download:** Connect to multiple sites simultaneously and record /download /playback video clips at any remote location. View/playback up to 36 cameras per screen viewing from anywhere at any time.
- **Remote Online Support:** With our software, users can access the DVR remotely to change local settings/configurations if and when necessary, without the need for a site visit.
- **Insert POS Transaction Data:** POS text can be superimposed on screen by means of video clips and projects remote live video via PTI-100 POS Text Inserter (optional).
- **Integrated Fingerprint Access Controller*³:** Audio and video recordings can be activated automatically when fingerprint access controller triggered. Access the " Access record " under View Log to search for all the access lists within specific time frames. Click on the relevant access list of " Access record ", and the video will playback the selected time record of this access record in conjunction with the video clip.

Specifications:

Digital Video Recorder Board



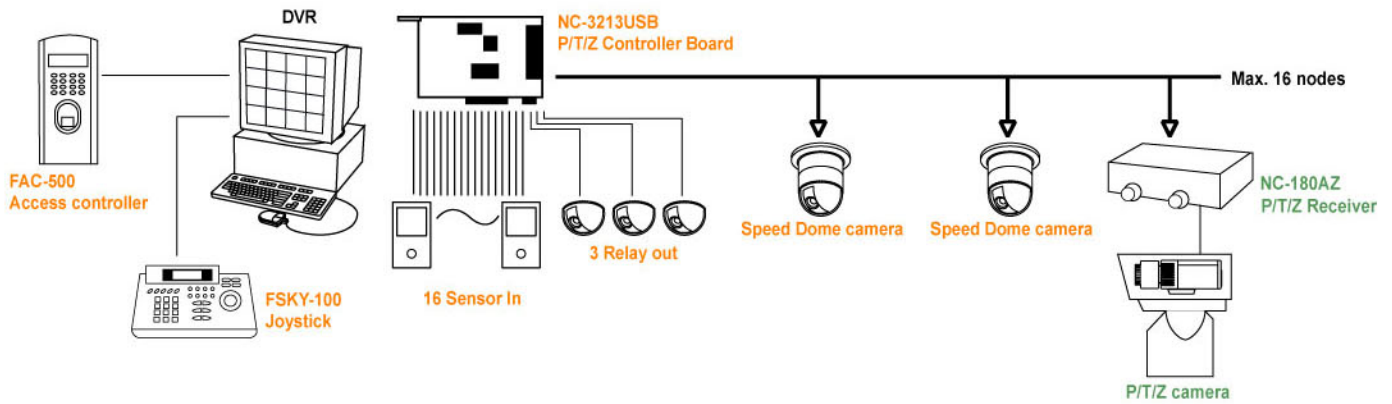
Item / Model	CP-1400AS XP	CP-3404HS XP	CP-3408ASE XP	CP-3416ASE XP	CP-1160RD Deluxe	CP-1320RD Deluxe
Interface	PCI Bus					
Max. Card on PC	4	4	2	2	-	-
Video Input	4	4	8	16	16	32
Recoding	30/25 FPS	120/100 FPS			480/400 FPS	
Display	30/25 FPS	120/100 FPS			480/400 FPS	960/800 FPS
Audio Recording	1	4 (Option)	8 (Option)		4 (Option)	
Resolution	704x480/704x576, 704x240/704x288, 352x240/352x288					
Frame Size*2	1.5K - 2.5K Byte / Frame @ 352x240 resolution 4K-6K Byte/ Frame @ 704x480 resolution					
Operating System	Win 98, Me, 2000, XP					
Video System	NTSC or PAL					
Compression	MPEG 4 / Wavelet / Motion JPEG/ MPEG 4 HQ					
Panic Button	For emergency call					
Auto-reboot	Watchdog recovers system after system failure.					
TV Out	1 Video out				1Video / 1 Split-screen out	1Video out 2 Split-screen out
Remote Controller	Yes					
POS Text Insert	Insert POS transaction data into video clip (Optional)					
Access Controller*3	Integrate Fingerprint (Optional)					
Temperature	Operation: 0-50°C (Non- Condensing) Storage: -10-60°C (Non- Condensing)					

NetCom Module



Item / Model	NC-3213USB	NC-180AZ
Main Function	Controller Board	P/T/Z Camera Receiver
Interface	RS-485, Full duplex	
Baud Rate	19200 /9600 /4800 /2400 BPS	9600 BPS
Distance	2 Km with twisted pair cable	
Connection Node	16 PTZ or Speed dome camera	-
I/O Port	6 Relay output	Pan /Tilt /Zoom /Focus /IRIS & 2 Relay out
Communication Port with PC	USB	-
Power Supply	From PCI Bus or power supply	DC 12V/500mA
Temperature	Operation: 0-50°C(Non- Condensing) Storage: -10-60°C(Non- Condensing)	
Extension I/O Module	NC-16DI: 16 Digital input(Optional) NC-07DO: 7 Relay output(Optional)	-

NetCom Configuration:



System Requirements

Local Recording/Transmitter Software (Witness XP)

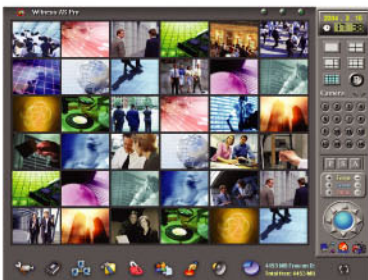
- Operating system: Windows 98, SE, ME, 2000 or XP.
- Pentium 4 1.5 GHz CPU minimum.
- Intel Chipset is strongly recommended.
- 256 MB RAM minimum; 512 MB RAM or better for Windows 2000 or XP.
- 7200 RPM hard drive speed or better recommended.
- Cooling fan for hard drive is recommended.
- Minimum 800 MB free hard drive space.
- 24 bit (true-color) VGA card or better.
- Sound card and speakers required for sound alarm/effects.
- Microphone with 2Vp-p output required for audio recording.
- Available PCI slot for Digital Video Recorder Board.
- Modem speed 33.6K or better; external modem that supports Wave files is recommended.

Remote client

(FreeView Pro TCP/IP view and AnyView Pro Modem viewer)

- Desktop or Notebook PC with Pentium III 500 MHz CPU or better.
- Operating system: Windows 98, SE, ME, 2000 or XP.
- 256 MB RAM minimum
- 800 MB free hard drive space minimum.
- Sound card and speakers required for sound alarm/effects.
- 24-bit (true-color) VGA card or better.
- Modem speed 33.6K or better.

Witness Pro



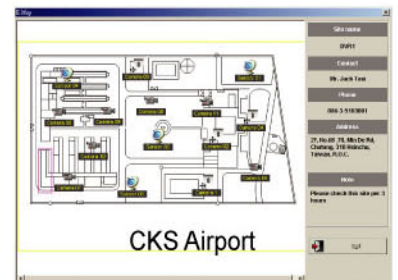
FreeView Pro



PDView



eMAP



Order Information:

CP-□□□ - □ - XP □

0,1,2,3

A: Audio recording (Optional)

1400AS, 3404HS, 3408ASE, 3416ASE, 1160RD, 1320RD

Note:

1. Tested using the following: Pentium 4 2.8 GHz, Intel 865PE chipset, 512M RAM, GeForce4 MX4000 VGA card 128M RAM, Windows 2000 SP4.2.
2. Image size depends on resolution, compression method, compression rate and video environment.
3. Call for availability.
4. @-Witness XP, AnyView Pro and FreeView Pro are trademarks® 2003 of I-View Communication Inc. All other trademarks belong to their respective owners.
5. Product specifications are subject to change without notice.

Distributor By:

i-view I-View Communication Inc.
A Safe Life

2F, No 70, Min De Rd, Chutung, Hsinchu, Taiwan, R.O.C.
Http://www.i-view.com.tw
Tel: 886-3-5103001 Fax: 886-3-5103002